

## **Globalization of Information: Agriculture at the Crossroads**

**XIth World Congress of the International  
Association of Agricultural Information  
Specialists**

**2005 Biennial Conference of the United  
States Agricultural Information Network**

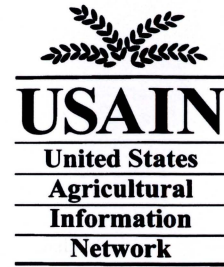
**May 15-18, 2005**

**Lexington, Kentucky USA**





*This conference is made possible through  
the generous support of our sponsors  
and exhibitors.*



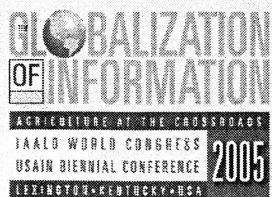
## **Sponsors**

Annual Reviews  
The British Library  
CAB International  
National Agricultural Library  
Swets  
Technical Centre for Agricultural and Rural Cooperation ACP-EU  
TEEAL  
Thomson Dialog  
Thomson Scientific  
University of Kentucky College of Agriculture  
University of Kentucky Libraries

## **Exhibitors**

AGORA  
BioOne / Amigos Library Services  
The British Library  
CAB International  
Canada Institute for Scientific and Technical Information (CISTI)  
Food and Agriculture Organization of the United Nations (FAO)  
The Haworth Press, Inc.  
National Agricultural Library  
Nerac  
Plant Management Network  
Samuel Roberts Noble Foundation  
Springer  
TEEAL  
Thomson Dialog  
Thomson Scientific

*IAALD and USAIN appreciate their contributions!*



## Conference Committees

### Antoinette Paris Greider, Conference Chair Program Planning Group

**Barbara Hutchinson, Chair**  
University of Arizona  
[Barbarah@ag.arizona.edu](mailto:Barbarah@ag.arizona.edu)

Michal Demes  
Food and Agricultural Organization of the United Nations  
[Michal.Demes@fao.org](mailto:Michal.Demes@fao.org)

Peter Gooch  
CABI (retired)  
[pgooch@gn.apc.org](mailto:pgooch@gn.apc.org)

Lutishoor Salisbury  
University of Arkansas  
[lsalisbu@uark.edu](mailto:lsalisbu@uark.edu)

Qiaoqiao Zhang  
CABI  
[q.zhang@cabi.org](mailto:q.zhang@cabi.org)

Patrick Brennan  
Noble Foundation  
[pbrennen@noble.org](mailto:pbrennen@noble.org)

Diana Farmer  
Kansas State University  
[dmfarmer@ksu.edu](mailto:dmfarmer@ksu.edu)

Peggy Johnson  
University of Minnesota  
[m-john@tc.umn.edu](mailto:m-john@tc.umn.edu)

Patricia Wilson  
University of Kentucky  
[pwilson@email.uky.edu](mailto:pwilson@email.uky.edu)

### Preconference Planning

**Sheila Merrigan, Chair**  
University of Arizona  
[Merrigan@ag.arizona.edu](mailto:Merrigan@ag.arizona.edu)

Susan McCarthy  
U.S. National Agricultural Library  
[smcarth@nal.usda.gov](mailto:smcarth@nal.usda.gov)

Erica Burnham  
McGill University  
[Erica.burnham@mcgill.ca](mailto:Erica.burnham@mcgill.ca)

Johannes Keizer  
Food and Agriculture Organization of the United Nations  
[Johannes.Keizer@fao.org](mailto:Johannes.Keizer@fao.org)

Rebecca Ryder  
University of Kentucky  
[Rjryde01@uky.edu](mailto:Rjryde01@uky.edu)

### Contributed Sessions

**Chair: Heather Moberly**  
Oklahoma State University  
[moberlh@okstate.edu](mailto:moberlh@okstate.edu)

Luti Salisbury  
University of Arkansas  
[lsalisbu@comp.uark.edu](mailto:lsalisbu@comp.uark.edu)

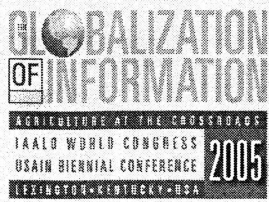
H.V. Mote  
National Botanical Research Institute, India  
[hv\\_motenbri@yahoo.co.in](mailto:hv_motenbri@yahoo.co.in)

Althea Aschman  
Virginia Polytechnic Institute and State University  
[aschmann@vt.edu](mailto:aschmann@vt.edu)

Qiaoqiao Zhang  
CABI  
[qzhang@cabi.org](mailto:qzhang@cabi.org)

Claudine Jenda  
Auburn University  
[jendaca@auburn.edu](mailto:jendaca@auburn.edu)

Debbie Currie  
IAALD Editor, ex-officio  
[Debbie\\_currie@ncsu.edu](mailto:Debbie_currie@ncsu.edu)



## Conference Committees

### Publicity

**Chair: Amy Paster**  
Pennsylvania State University  
[alp@psulias.psu.edu](mailto:alp@psulias.psu.edu)

Patrick Brennan  
Noble Foundation  
[pbrennen@noble.org](mailto:pbrennen@noble.org)

Peter Ballantyne  
INASP  
[pballantyne@inasp.info](mailto:pballantyne@inasp.info)

Amy Blair  
Michigan State University  
[laira@pilot.msu.edu](mailto:laira@pilot.msu.edu)

Susan McCarthy  
U.S. National Agricultural Library  
[smcarth@nal.usda.gov](mailto:smcarth@nal.usda.gov)

### Sponsorship/Vendors/Scholarships

Valerie Perry  
University of Kentucky  
Sponsorship  
[vperry@uky.edu](mailto:vperry@uky.edu)

Carla Casler  
University of Arizona  
Vendor Exhibits  
[ccasler@ag.arizona.edu](mailto:ccasler@ag.arizona.edu)

Peter Gooch  
CABI (Retired)  
Sponsorship for Librarians  
from developing countries  
[pgooch@gn.apc.org](mailto:pgooch@gn.apc.org)

Maria Pisa  
U.S. National Agricultural Library  
Sponsorship for Librarians  
from developing countries  
[mpisa@nal.usda.gov](mailto:mpisa@nal.usda.gov)

Peter Ballantyne  
International Network for the Availability  
of Scientific Publications (INASP)  
Sponsorship for Librarians  
from developing countries  
[pballantyne@inasp.info](mailto:pballantyne@inasp.info)

### IAALD 50th Anniversary

Margot Bellamy  
CABI (Retired)  
[margot.bellamy@fritillary.demon.co.uk](mailto:margot.bellamy@fritillary.demon.co.uk)

Pam Andre  
U.S. National Agricultural Library (Retired)  
[pamandre@hotmail.com](mailto:pamandre@hotmail.com)

### Local Arrangements

Terry Buckner  
Lexington Community College  
[Terry.Buckner@kctcs.edu](mailto:Terry.Buckner@kctcs.edu)

Christiana (Tiana) French  
Lexington Community College  
[Tiana.French@kctcs.edu](mailto:Tiana.French@kctcs.edu)

#### *Technical Advisor:*

Amelie Charron  
University of Kentucky  
[acharron@uky.edu](mailto:acharron@uky.edu)

#### *Facilitators:*

Elizabeth (Beth) Kraemer  
University of Kentucky  
[kraemer@email.uky.edu](mailto:kraemer@email.uky.edu)

#### *Program Editor:*

Mary Jo (Jo) Staggs-Neel  
University of Kentucky  
[jo.staggs-Neel@uky.edu](mailto:jo.staggs-Neel@uky.edu)

#### *Web Master and Graphic Designer:*

Dennis Davenport  
University of Kentucky  
[Dennis.Davenport@uky.edu](mailto:Dennis.Davenport@uky.edu)



May 15, 2005

Dear Conference Attendee:

Welcome to Lexington, Kentucky! We hope that you have time to take advantage of this unique region in the United States. Central Kentucky has much to offer.

We have a packed two major conferences into the next four days. We have lined up 31 major speakers, accepted 40 presentations for the Contributed Sessions, 18 exhibitors and offer 34 posters for you to view. In addition we are providing 5 pre-conference workshops on varied topics and we organized a number of social events which we hope you will enjoy.

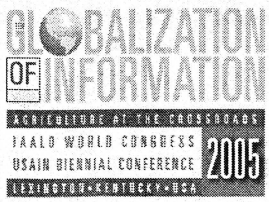
The programming has been balanced between international and US interests and provides a unique opportunity for all of us to learn what is going on world wide. Information is now a global commodity and we have designed the programming to reflect that. Many of our speakers will be here during most of the conference. Please feel free to interact with them and express your views. Our vendors are also full conference participants so we hope you will take the opportunity to discuss your needs with them.

The hotel location provides you with ample opportunity to explore some of the city. The Radisson Plaza is located near historic sites, the Lexington History Museum, Lexington Public Library, beautiful botanical gardens in the Lexington Cemetery and the LexTran Transit Center where buses depart for all parts of the city. Please check with the information desk for any of your information needs.

We hope that you have a wonderful conference. There are many volunteers from the University of Kentucky here, so feel free to ask questions or let us know if you need anything. Kentucky is known for its hospitality and we hope that you find it as hospitable as its reputation. Have a wonderful conference.

Toni Greider  
Conference Chair





## General Conference Information

**Conference Registration Fee:** This fee includes one ticket to all meals sponsored by the conference. If you have paid for additional tickets and do not need them, please return them to the Information/Registration desk with a Request for Refund form (in your conference bag). The Information/Registration Desk hours are:

Saturday	12-5
Sunday	9-5
Monday	7-6
Tuesday	7:30-5
Wednesday	7:30-2

**Schedule:** We are squeezing one three day conference and one five day conference into four days. For this reason the schedule is tightly packed with little time in between. We apologize for that but we are trying to maximize our time together. The hotel has asked us that we vacate the ballroom at the appointed time so the staff can get in and refresh it. Please do not linger in the ballroom but move out to the exhibit area.

**Meals:** Breakfast and breaks will be served from the window box area. All other meals are in Ballroom 3 and 4.

**Contributed Sessions:** The contributed sessions (posters and papers) are listed in separate publications. You are free to move among the various tracks as you wish. We ask that you enter or leave the room as quietly as possible. Each poster has a time where the author will be presenting the poster. Please note these times and go by for the presentation.

### Internet Access

We are charged each time we log into a computer for internet access. Please do not log off the computers to help us keep costs down. We are providing limited computer access for e-mail. There is also email access available at Lexington Public Library located at 140 East Main Street.

### Transportation

**Buses to the Horse Park:** Busses will begin running at 5:30 p.m. The Activities will begin at 6:00pm. The busses will run in a loop until 6:30 p.m. and begin the return loop at 8:00pm. They will run the return loop until 10:00pm

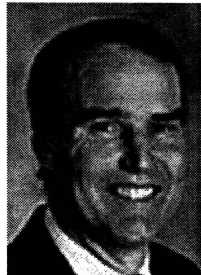
### Tours

The Cemetery Tour has been changed to the Arboretum Tour and transportation will be provided. Transportation for the Arboretum Tour and the Library tour leave 15 minutes before the tours begin.

**General Information:** There are many things to see and do in the Lexington area. Please visit the Information Desk to find out what the options are. The desk will have information on restaurants, churches, bus schedules, walking tours and other information. We will have people staffing our desk from the Lexington Convention Bureau on Monday afternoon.



# Featured Speakers



## Richard Beahrs

Richard Beahrs retired after a 35 year career as a media executive with Time Warner at the beginning of 2004. Most recently he served as President of Court TV. Prior positions include the Presidency of The Comedy Channel (now known as Comedy Central) and a Senior Vice Presidency of HBO where he served as the head of New Business Development and managed the launch of Cinemax.

His current focus is on global environmental issues. He serves on the United Nations Hunger Task Force which is charged with developing a plan for halving the instances of extreme malnutrition throughout the world over the next decade. Long interested in environmental and natural resource science, Beahrs and his wife, Carolyn, also a Berkeley alum, established the Beahrs Environmental Leadership Program in August 2000 with a gift to UC Berkeley. Its core is an intensive inter-disciplinary summer certificate course in "Sustainable Environmental Management" for scholars and emerging leaders from around the world. It is the leading international program within the Center for Sustainable Resource Development of the College of Natural Resources at UC Berkeley.

Beahrs also serves as a Trustee of the School of Management at St. Petersburg University (Russia). He is the Chairman of the Arbor Day Foundation, which is the world's largest nonprofit tree planting organization. He has previously served on the Board of Trustees of the World Agroforestry Centre in Nairobi, Kenya and the Near East Foundation in New York.

In 2001, he was the recipient of the inaugural College of Natural Resources Citation at the University of California (Berkeley). In 2003 he received the cable television industry's highest award for public affairs for his development of the Choices and Consequences initiative. The program uses live television events, local town meetings, the Internet, and classroom materials to enhance the decision-making skills of teens and young adults.

Beahrs and his wife, Carolyn, reside in Connecticut and Berkeley, California and have four grown children.

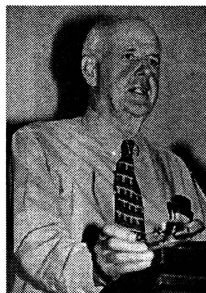


## Kimberly Douglas

Kimberly Douglas has long been involved in designing and implementing automated library services. She introduced desktop publishing to the libraries, initiated their online presence and provided leadership in the design and implementation of Caltech's groundbreaking automated document delivery service and in the migration to a fully integrated automated library system. She has also taken a leadership role in initiating digital collections at Caltech, beginning in 1999 with the campus discussion regarding Copyright in Scholarly Communication. Ms. Douglas has served on the IEEE Library Advisory Committee and is currently a member of the Visiting Committee for the Goddard Space Flight Center Library. She has been active in Library Information and Technology Association (LITA) Interest Groups by helping to found, chair and develop programs for the Interest Group on Electronic Publishing. A staff member in the Caltech Library System since 1988, Ms. Douglas became Caltech's University Librarian in January 2004 after serving as acting director of libraries since April 2003. Ms. Douglas has held positions in scientific research libraries at the Bigelow

Laboratory of Ocean Sciences in Boothbay Harbor, Maine, and at the University of Southern California in Los Angeles, CA. She received an MS in library science from Long Island University in Greenvale, NY.

## Wendell Berry



Wendell Berry grew up farming in Henry County, Kentucky where he still resides. Mr. Berry works his farm with horses as opposed to the modern tools of most farmers today. He is a man who is striving to live (and of course failing) as one with nature, a message that rings from his poetry, novels, and essays. Mr. Berry earned both his B.A. and M.A. in English from the University of Kentucky and has taught at Stanford University, Georgetown College, New York University, and for a good many year at the University of Kentucky.

Mr. Berry is the author of 32 books of fiction, poetry and essays including the *Unsettling of America: Culture and Agriculture* (1996); *The Gift of Good Land: Further Essays Cultural and Agricultural* (1983); *Farming: A Handbook* (1971); *A Continuous Harmony: Essays Cultural and Agricultural* (1971), and "Why I am not Going to Buy a Computer" (1987 essay). His most recent works include *Life is a Miracle* (2000) and *Citizenship Papers* (2003).

Mr. Berry has received numerous awards in his literary career including the Jean Stein Award from the American Academy and Institute of Arts and Letters; The T. S. Eliot Award, The Aiken Taylor Award for Poetry, the John Hay Award of the Orion Society, and The Christian Century's Award for Excellence in Poetry. In 2004 Mr. Berry received the American Library Association Eli Oboler Award, awarded for the best published work on intellectual freedom. He holds honorary

degrees from Centre College, Transylvania University, Berea College, University of Kentucky, Santa Clara University, and Eureka College. A complete list of Wendell Berry's works can be found at: <http://www.users.dircon.co.uk/~tipiglen/wendellberrybooks.htm#top>

# Preconference

## **Continental Breakfast**

**7:30 – 9:00.am**

**Saturday, May 14, 2005**

**Building Digital Library Collections and Services for Libraries in the Developing World**

**9:00 a.m. – 4:30 p.m.**

**Sponsored by CAB International**

This workshop is designed for: 1) librarians and information specialists from libraries in the developing world and 2) librarians and information specialists from other countries who have partners in the developing world or an interest in digital divide issues. Topics covered will include but are not limited to using AGORA and other resources to enhance library services, TEEAL, CGIAR Virtual Resource Centres, and bandwidth issues in the developing world.

**Instructors:** Luz Marina Alvare (IFPRI, Washington, DC), Carla Casler (University of Arizona, Arid Lands Information Center), Gracian Chimwaza (TEEAL/AGORA Africa Office, Harare, Zimbabwe), Nan Hyland (Head of Reference, Mann Library, Cornell University), Mary Ochs (AGORA Information Management Officer, Food and Agriculture Organization and TEEAL Project Director, Mann Library, Cornell University), Kevin Painting (CTA), Pippa Smart (INASP)

## **Fundamentals in Digital Preservation: OAIS and the TDR – Sponsored by USAIN**

**8:30 a.m. to noon**

The Reference Model for the Open Archival Information System (OAIS), authored by NASA, articulates the interoperable components of a persistent digital archive. Included in the model are six functional entities including ingest, archival storage, data management, administration, preservation and planning and access. Standards and best practices underpin the functions. The Research Libraries Group (RLG) and OCLC collaborated to interpret the OAIS reference model and apply it to library and archival mandates. Their work led to the description of a Trusted Digital Repository (TDR) which features six attributes: OAIS compliance, administrative responsibility, organizational viability, financial sustainability, technological suitability, system security and procedural accountability. This workshop will explore these models and their relationship and explain how they are shaping strategies for the preservation of digital assets of lasting and enduring value.

**Speaker:** Priscilla Caplan (Assistant Director, Digital Library Services, Florida Center for Library Automation)

## **Harvesting Data for the Masses: The Open Archives Initiative Protocol [for]**

**Metadata Harvesting (OAI-PMH).**

**1 p.m. – 4:30 p.m.**

**Sponsored by USAIN**

The Open Archives Initiative Protocol for Metadata Harvesting (OMI-PMH) is designed to enable resource discovery across distributed and heterogeneous collections. OAI-PMH was originally designed to facilitate information sharing in the e-print archives environment but is now used by a wide variety of information providing communities to aggregate and disseminate a wide variety of digital collections. OAI-PMH builds on the HTTP protocols of the World Wide Web as well as XML and Dublin Core. OAI-PMH sorts the digital library world into "Metadata Providers" (repositories of metadata) and "Service Providers" (harvesting operations). This workshop will outline the fundamentals of OAI-PMH, showcase some of the Service Providers, and explain the standards that promote efficient and accurate harvesting.

**Speaker:** Priscilla Caplan (Assistant Director, Digital Library Services, Florida Center for Library Automation)

**Sunday, May 15, 2005**

**The Role of Open Access Publishing in Science**

**8:00 a.m. to Noon**

This program offers a panel discussion covering open access publishing and the importance of the initiative in the developing world. Open Access models, institutional repositories, as well as the librarian's role will also be discussed. The panel will cover the following topics:

Open Access: An overview, Gerry Mckiernan, (Iowa State University, Ames Iowa, USA)

Open Access and Commercial Publishers. Thomas Krichel, Research Papers in Economics (RePEC) [repc.org] Also Link to Thomas Krichel

New Models of Open Access: PLoS. Helen Doyle, Public Library of Science

The importance of OA initiative for developing countries. Pipa Smart, International Network for the Availability of Scientific Publications

New role of Libraries in an Open Access publishing world: Edith Hesse, Consultative Group for International Agricultural Research

(CGIAR)Institutional Repositories, a Backbone for Open Access: Stephen Rudgard, Food and Agriculture Organization of the United Nations.

Stephen Rudgard, Moderator

## **Portals for the Sciences**

**1:00 to 4:30 p.m.**

This seminar covers the role of librarians, lessons learned, new directions and international impact of portals. The program reviews what a portal is and how the concept is changing. It explores collaboration among the learning, research and information environments and reviews important portal projects. The projects reviewed include the National Science Digital Library (US); AgNIC (US); and FAO/WAINCENT (International).

**Speakers:** Krisellen Maloney (ARL Scholar's Portal liaison for the University of Arizona), Diane Hillmann (Director of Library Services and Operations, National Science Digital Library), Melanie Gardner (AgNIC Alliance Coordinator), Sheila Merrigan (University of Arizona)



# Program

## **Saturday, May 14th - Preconference activities**

9:00 – 4:00 IAALD Board Meeting (2:00 – 4:00 outgoing and incoming boards meet) **Boone**

9:00 – 5:00 USAIN Board Meeting **Clay**

8:30 – 12:00 Preconference: Fundamentals in Digital Preservation: OAIS and the TDR. Sponsored by USAIN. **Lincoln**

9:00-5:00 Preconference: Building Digital Library Collections and Services for Libraries in the Developing World  
**Breckinridge**

1:30 – 4:00 Preconference: Harvesting Data for the Masses: The Open Archives Initiative Protocol [for] Metadata Harvesting (OAI-PMH). Sponsored by USAIN. **Lincoln**

## **Sunday, May 15th - Preconference activities**

8:00-12:00 Preconference: The Role of Open Access Publishing in Science **Boone**

9:00-12:00 Incoming IAALD Board Meeting **Clay**

1:00-4:30 Preconference: Portals for Science **Boone**

2:00-5:00 CABI Advisory Board **Breckinridge**

### **USAIN Interest Group & Committee Meetings Ballroom 4**

10:00am-12:00pm Government Relations Committee

4:30-5:30pm Technology Trends Interest Group

5:00-6:00pm AgNIC Interest Group

5:00-6:00pm AGRICOLA Interest Group

5:00-6:00pm Social Issues / Rural Information Interest Group

6:30-9:00 Evening reception at the Explorium of Lexington. Sponsored by University of Kentucky Libraries

## **Monday May 16th – Conference**

7:30-5:00 – Information/Registration Desk Open

7:30-8:30 - Breakfast Buffet. Breakfasts and Breaks Sponsored by CAB International.

8:30-8:50 - Welcome & Introductions: Carol Diedrichs; Pamela André; Patricia Wilson **Ballrooms 3 & 4**

8:50-9:45 - Opening Keynote Address: Making Sense of It All: Coherence in the Age of the Internet, Dick Beahrs, U.N. Hunger Task Force. Sponsored by University of Kentucky College of Agriculture **Ballrooms 3 & 4**

9:45-10:00 - Questions and discussion

10:00-10:30 - Break - Exhibits open at first break and open during all breaks

# Program

10:30-11:45 – Role of the Organization in the Digital Age – Peter Ballantyne (INASP); Gerhard Schiefer (INFITA); Danielle Jacques (CALIS); Peter Young (NAL); Lutishoor Salisbury- Moderator . Sponsored by Thomson Scientific.  
**Ballroom 3 & 4**

12:00 -1:15 - "Introducing IAALD" Luncheon, Peter Young (NAL) **Ballrooms 3 & 4**

1:30 – 3:00 - Contributed Sessions

**Session 1: Ballroom 3,  
Mary McLaren, Facilitator**

1:35-1:55: CAB International: Update on Products and Services

1:55-2:55: Collection Development IG: *Library and Extension Cooperation*

JoAnn Devries (University of Minnesota)  
Randall Heatley (Michigan State University)  
Patricia Kelly (CSIRO)

Allison Level (Colorado State University)  
Barbara Hutchinson (University of Arizona)

**Session 2: Boone,  
Elizabeth Dodsworth, Facilitator**

1:35-1:55 Michael Cook (Cornell University) *Enabling Access to Classic Works in Agriculture with the Core Historical Literature of Agriculture*

1:55-2:15 Neena Singh (Pant University of Agriculture and Technology) *Over Coming Digital Divide: Challenges and Opportunities with Special Reference to India* **CANCELLED**

2:15-2:35 Suguna Chinnakalappagari (Acharya N.G. Ranga Agricultural University) *Digital Access to Agricultural Information for Subject Matter Specialists in India*

2:35-2:55 Mila M. Ramos (International Rice Research Institute) with Ricarte V. Castro and Concepcion D.L. Saul: *PhilAgriNet: Linking Philippine Agricultural Knowledge with Scientists Worldwide*

**Session 3: Lincoln,  
Mohan Ramaswamy, Facilitator**

1:35-2:35 Technology Trends IG: *Institutional Repositories: Are They worth the Effort?*

Susan Logan (Ohio State University) Fritz Getze (University of Delaware Library)  
Vernon Kisling (University of Florida)

2:35-2:55: Linda Futato: *Dialog: New Technologies for Post Processing Research Reports*

**Session 4: Ballroom 4,  
Sean Gaffney, Facilitator**

1:35-1:55 Dr. Deva Eswara Reddy (Texas A&M University) *Four Ds Model of Agricultural Information Transfer to Study the Impact of Digital Access to Information*

1:55-2:15 Nan Hyland (Cornell University) *Project Management and Redesign of the USDA Economics, Statistics and Market Information System*

2:15-2:55 *Big Rewards-AgNIC Cooperative Content-building Projects*

Melanie Gardner (National Agricultural Library)  
Elaine Nowick (University of Nebraska-Lincoln)  
Lucy Fisher (Cornell University)  
Philip Herold

Robert B. McGeachin (Texas A&M University)  
Mohan Ramaswamy  
Bonnie Waddell  
Amy Paster (Pennsylvania State University)



# Program

3:00-3:30-Break

3:30-5:00-Contributed Sessions

## **Session 5: Lincoln,**

### **Kathy Fescemyar, Facilitator**

3:35-3:55 Ruth Apelt, *Dialog: Custom Solutions for Integrating Dialog information into Your Workflow*

3:55-4:55: Social Issues IG: *Fair Trade Labeling (What is it and Who Benefits?)*

Margaret C. Merrill (Virginia Tech University Libraries)

Regina W. Cannon (University of Georgia)

Dr. Deva Eswara Reddy (Texas A&M University)

Tim McKimmie (New Mexico State University)

## **Session 6: Boone,**

### **Debbie Sharp, Facilitator**

3:35-3:55 Yan Han with Jeanne Pfander and Marianne Stowell Bracker (University of Arizona Library) *Digitizing Rangelands: Providing Open Access to the Archives of Society for Range Management Journals*

3:55-4:15: Narisi Mubangizi (Makerere University) with Margaret N. Mangheni (Makerere University) and C. J. Garforth (The University of Reading) *Challenges and Opportunities of Private Agricultural Service Providers in Accessing and Utilizing Information Under National Agricultural Advisory Services System in Uganda*

4:15-4:35: Elizabeth Dodsworth (CAB International) *Dissemination and Use of Electronic Knowledge Management Tools for Rural Development in Tanzania*

4:35-4:55 Jodee L. Kawasaki (Montana State University) *Librarians and Rural Leaders Bridge the Digital Divide*

## **Session 7: Ballroom 3,**

### **Maria Pisa, Facilitator**

3:35-4:35: AgNIC IG: *AgNIC: Focus on Partners*

Elaine Nowick (University of Nebraska-Lincoln)

Leslie Delserone (University of Nebraska-Lincoln)

Shelia Merrigan (University of Arizona)

Monica Pereira (University of Georgia)

4:35-4:55 Brian McDonough, Thomson Scientific: *ISI Web of Knowledge: The Source for the World's Most Important Agriculture, Food Science & Technology and Applied Life Sciences Resources*

## **Session 8: Ballroom 4,**

### **Luti Salisbury, Facilitator**

3:35-3:55: Shaun Hobbs, CABI Publishing: *The CABI Archives, Summarizing the Scientific Heritage of the last 100 Years*

3:55- 4:15: Jeanne Drewes, University of Arizona with Anita M. Ezzo (Michigan State University) *National Preservation Program for Agricultural Literature: Access and Preservation*

4:15-4:55: Preservation Committee: *Preservation Committee Update*

Joy Paulson (Cornell University)

Mary Ochs (Cornell University)

Peter Young (National Agricultural Library)

# Program

5:30 -7:00 - Innovations/Demonstrations/Posters (combination of demonstrations by commercial, individual, and group innovations in the use and development of information technologies as well as poster sessions for various activities). Includes a happy hour in the Innovations area with heavy hors d'oeuvres which can substitute for dinner if desired.

7:00-9:00 - IAALD 50th Anniversary dessert celebration **Ballroom 3 & 4**

## **Tuesday May 17 – Conference**

7:30-8:30 – Breakfast Buffet. Sponsored by CAB International.

7:30-8:30 - USAIN Breakfast Business Meeting **Ballroom 3 & 4**

8:30 – 9:15 Technology Keynote: *Whither Institutional Repositories: Documents to Data*, Kimberly Douglas (CalTech University) Sponsored by University of Kentucky Libraries. **Ballroom 3 & 4**

9:15 – 10:30 – *Creating Collaboratories, Communities and Collections in the Digital age*: Harry Samuels (Endeavor); Brent Seales (University of Kentucky); Jon Corson-Rikert (Cornell University); Janet McCue, Moderator. Sponsored by National Agriculture Library. **Ballroom 3 & 4**

10:30-11:00 – Break. Sponsored by CAB International

11:00-12:15 *New Opportunities for Collaboration: The role of the Libraries and Extension in the digital world*. Panelists: Paula Kaufman, Carla Stoffle, Lyla Houglum, Larry Turner. Carol Diedrichs, Moderator. Sponsored by The National Agricultural Library. **Ballroom 3 & 4**

10:30-11:00 – Break. Sponsored by CAB International

11:00-12:15 *New Opportunities for Collaboration: The role of the Libraries and Extension in the digital world* continues **Ballroom 3 & 4**

12:30-1:45 - Networking luncheon sponsored by The British Library **Ballroom 3 & 4**

1:45 – 2:30 *eXtension: Tapping the Power of Cooperative Extension*. Dr. Carla Craycraft and Dr. Craig Wood, eXtension Content Coordinators **Ballroom 3 & 4**

2:30 – 3:15 *Indian Country Extension 101*. Dr. Joe Hiller (University of Arizona Cooperative Extension Colorado River Indian Tribes Library). Amelia Flores (CRIT Library) **Ballroom 3 & 4**

3:15-3:45 – Break. Sponsored by CAB International

3:45-5:15 - Contributed Sessions

# Program

## **Session 1: Ballroom 3,**

### **Susan K. Smith, Facilitator**

3:50-4:50 Agricola IG: *What then, AGRICOLA in the Google-Age?*

Paul Kelsey (Louisiana State University)

Karl Schneider (National Agricultural Library)

David Celano (CABI Publishing)

Elizabeth Ten Have (Thomson Scientific)

Shaun Hobbs (CABI Publishing)

Jim Orris

Frank Bilotto

Helen Smith (Pennsylvania State University)

4:50-5:10 The British Library: Update on Services

## **Session 2: Lincoln,**

### **Sharon Fujitani, Facilitator**

3:50-4:10 Margaret Sraku-Lartey (Forestry Research Institute of Ghana) *Developing the Professional Skills of Information Managers in the Forestry Sector in Africa*

4:10-4:30 Michael Weber (Michigan State University) with Josué Dioné, Valerie Kelly, and John Staatz (Michigan State University) *Applying Information Communication Technology to Enhance African Capacity in Agriculture and Food Policy Research, Outreach and Teaching: A Collaborative Internet-Based Initiative To Build A Food Security and Policy Information Portal for Africa*

4:30-4:50 Mohan Ramaswamy (Kansas State University) with Donna Schneck-Hamlin (Kansas State University) *Bridging the Knowledge Disparity: Success Story from a Chinese Translation and Co-publishing Endeavor*

4:50-5:10 Lootishoor Salisbury (University of Arkansas) with Vikramjit Bajwa: *Current Awareness Delivery Options in Food Science and Technology: Their Characteristics, Coverage, and Timeliness*

## **Session 3: Boone,**

### **Regina W. Cannon, Facilitator**

3:50-4:10 Dan Cherubin (Rabobank Intl) *Specialties Among Specialties: Developing a Solo Agribusiness Information Center*

4:10-4:30 Patricia Kelly (CSIRO) *Where is My Team? A manager's POV on Working with a Team of Remote Information Specialists.*

4:30-4:50 Susan Teghtmeyer (Southwest Missouri State) *Solo Librarianship at the Paul Evans Library of Fruit Science, SMSU: A Personal Account*

4:50-5:10 Heather K. Moberly (Oklahoma State University) with Heather Cameron (Oklahoma State University); Jody Newton, Vicki Philips (Oklahoma State University); Sandra E. Morgan: *Establishment and Integration of an Indoor Plant Garden into an Academic Library, Professional Veterinary Medical School Curriculum, and Community Outreach*

## **Session 4: Ballroom 4,**

### **Mila M. Ramos, Facilitator**

3:50-4:10 Peter Young (National Agricultural Library) *The National Digital Library for Agriculture*

4:10-4:30 Robert S. Allen (University of Illinois) *Use of GIS in Agriculture Measured by Citation Analysis*

4:30-5:10 *Using Web Services to Deliver Customized AgNIC Applications*

Barbara Hutchinson (University of Arizona)

Mark Einstein (Purdue University)

Randall Heatley (Michigan State University)

Vernon Chapman (National Agricultural Library)

6:00-8:30 - All conference dinner Kentucky Horse Park. "Local Knowledge in the Age of Information", Wendell Berry, speaker



# Program

**Wednesday, 5/18 – Conference**

7:30-9:30 - IAALD General Assembly (breakfast will be provided) **Ballroom 3 & 4**

9:30 -10:30 - Overcoming the Digital Divide: a Panel Discussion on Initiatives to Make Agricultural Information Freely Accessible to All. Stephen Rudgard FAO; Elizabeth Dodsworth, CABI; Dylan Winder, DFID; Gracian Chimwaza, TEEAL/AGORA. Mei Fangquan, Agricultural Institute, CAAS, Dorothy Mukhebi, RAIN; Peter Young, NAL, Moderator. Sponsored by Thomson Dialog. **Ballroom 3 & 4**

10:30-11:00 – Break. Sponsored by CAB International

11:00-12:00 – Overcoming the Digital Divide Continues. Sponsored by Thomson Dialog. **Ballroom 3 & 4**

12:15-1:45 - Awards luncheon Ballroom 3 & 4

2:00 -3:30 - Contributed Sessions

**Session 1: Ballroom 3,**

**Deva E. Reddy, Facilitator**

2:05-2:25 Jeanne Pfander, University of Arizona Library with Danielle Carlock: *The Arizona Electronic Atlas: Providing Web-based Interactive Mapping for Arizona Agriculture and Natural Resources*

2:25-2:45 Martin Kesselman, Rutgers University Libraries: *Building Bridges: Virtual and Real Collaborations of Librarians, Departments, and Industry for Food and Nutrition Business Information*

2:45-3:05 Debra L. Currie, North Carolina State University with Eleanor M. Smith: *I Know It's Here Somewhere: Using Technology and Other Techniques to Identify and Improve Access to Hidden Collections*

3:05-3:25 Susan Logan, Ohio State University with Constance Britton; Robert Furbee: *“What’s Wrong With My Tomatoes?”: Extension Staff and Librarians Collaborating to Answer Questions Electronically : National Practice and a Case Study*

**Session 2: Lincoln,**

**Abby Heath, Facilitator**

2:05-2:25 Mary Ochs, Cornell University: *A User Study of TEEAL (The Essential Electronic Agricultural Library)*

2:25-2:45 Innocent Awosom, University of Minnesota with Beatrice Mbi: *Open Access, a panacea to the Digital Divide for Agricultural Research in Developing countries?*

2:45-3:05 Paul Mwanzilo, Egerton University Library with Dr. Constantine M. Nyamboga: *Sharing Information About the Best Practices in Sustainable Development*

3:05-3:25 Clement Entusa-Mensah, CSIR-INSPI: *Revitalizing the Indigenous Agricultural Marketing System in Ghana Through the E-Commerce Project: A Performance Appraisal*

**Session 3: Boone,**

**Dana W.R. Boden, Facilitator**

2:05-2:25 Pete Cookingham, Michigan State University Libraries: *Linking to Specialized Literatures: Looking Beyond the refereed Literature in Turf Grass Science*

2:25-2:45 Joseph Kipling'at, Moi University: *Diffusion of ICTs in Communication of Agricultural Information among Agricultural Researches and Extension workers in Kenya*

# Program

2:45-3:05 Vernon Kisling (University of Florida): *Florida Agriculture Publication Technology - Revolution Gives Way to Evolution*

3:05-3:25 Sufen Sun (Beijing Academy of Agricultural and Forestry Services) *Research and Practice of Rural Distance Educational and Informational Service in Beijing*

## Session 4

### Winn Theirl, Facilitator

2:05-2:45 Government Relations Committee: *Advocacy, International Trade, and Food Safety & Security: Locating*

Barbara Hutchinson (University of Arizona)

Diana Farmer (Kansas State University Library)

Kathy Fescemy (Pennsylvania State University)

Paul Kelsey (Louisiana State University)

2:45-3:05 Invited Discussion: *Information Plight of Veterinarians*

3:05-3:25 Eleanor Frierson (National Agricultural Library) *Science.gov*

3:30 -4:00 – Break

4:00 -5:00 - Facilitated session to discuss partnering opportunities and initiatives; session will begin with an overview of preliminary ideas presented by several speakers, Judy Wiza, University of Kentucky Libraries, facilitator **Ballroom 3 & 4**

5:00 – 15 -Conference wrap-up and Goodbyes **Ballroom 3 & 4**

Downtown Dine Around (local people will take small groups of people to various downtown restaurants or people can dine on their own)

Wireless Access Sponsored by:  
Thomson Scientific





# Tours

## **William T. Young Library 9 a.m. to Noon**

Tour the largest library in the Commonwealth of Kentucky. Located on the University of Kentucky campus this 361,000 square foot structure seats more than 4,000 people and holds 37 miles of shelves for library resources. Unique features of the building include the polished Treuchtlingen Marble floors in the lobby area, the Hernmarck tapestry depicting William T. Young and his beloved horse Storm Cat, and 64 quilts from the Wade Hall collection collected from the Ohio Valley Region. The tour leaves 9 a.m. from the hotel and returns at noon. A mid morning break is included.

Cost US\$6.00 per person.

## **Botanical Tour of Lexington Arboretum 1 p.m. to 4 p.m.**

Join Dr. Rick Durham, faculty member and Master Gardener Coordinator from the University of Kentucky College of Agriculture to visit this unique botanical garden that is jointly owned by the Lexington-Fayette County Urban Government and the University of Kentucky. The Arboretum features a number of gardens including: Home Demonstration Garden; Vegetable Garden; Herb Garden; Home Fruit and Nut Gardens; All America Selection Trials; Perennial Collection; Ground Cover Demonstrations; "Walk Across Kentucky" . A full description of the various gardens is available at the registration desk. Transportation will be provided to the Arboretum.

Cost US\$5.00 per person.

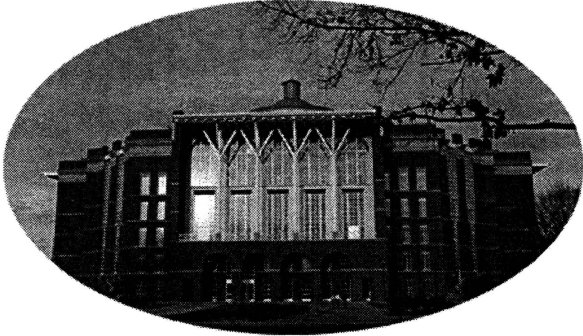
## **Walk in Lexington Cemetery**

The Lexington Cemetery is within walking distance of the hotel. Founded in 1848 this 170 acre carefully landscaped cemetery sits on the edge of the downtown area of Lexington. The cemetery is known for its flowering trees such as Dogwoods, ornamental cherry, crabapple, and magnolia. Garden areas are located through out the cemetery full of tulips, jonquils, and irises. A formal garden flanks the lower lake which blooms continuously from early spring to fall. While we had to cancel our planned walking tour, there are self tour maps available in the cemetery office for those who wish to tour it.

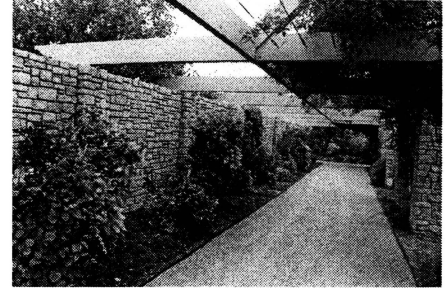
*Other local tours will be available for purchase from local tour agencies during and after the conference.*

# A Glimpse of the Tours

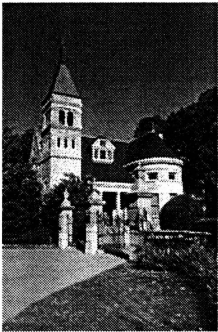
## William T. Young Library



## Lexington Arboretum



## Lexington Cemetery



# Floor Plans

